



BETUN SELO KSO

JUNE 2019

DISCLAIMER

This presentation ("Presentation") is being issued by Andalus Energy and Power Plc (the "Company" or "Andalus") for information purposes only.

The content of this Presentation has not been approved by an authorised person for the purposes of Section 21(2)(b) of the Financial Services and Markets Act 2000. Reliance on this Presentation for the purpose of engaging in any investment activity may expose an individual to a significant risk of losing all of the property or other assets invested.

This Presentation is not an admission document or an advertisement and does not constitute or form part of, and should not be construed as, an offer or invitation to sell or any solicitation of any offer to purchase or subscribe for any shares in the Company ("Shares") in the United States or any other jurisdiction. Neither the Presentation, nor any part of it nor anything contained or referred to in it, nor the fact of its distribution, should form the basis of or be relied on in connection with or act as an inducement in relation to a decision to purchase or subscribe for or enter into any contract or make any other commitment whatsoever in relation to any Shares. Whilst the Presentation has been prepared in good faith, no representation or warranty, express or implied, is given by or on behalf of the Company, its respective directors and affiliates or any other person as to the accuracy or completeness of the information or opinions contained in this Presentation and no responsibility or liability whatsoever is or will be accepted by the Company, its respective directors and affiliates or any other person for any loss howsoever arising, directly or indirectly, from any use of such information or opinions or otherwise arising in connection therewith. Any such liability is expressly disclaimed.

The information in this Presentation does not purport to be comprehensive and only some of the information has been independently verified.

The contents of this Presentation are confidential and may not be copied, distributed, published or reproduced in whole or in part, or disclosed or distributed by recipients to any other person. No reliance may be placed for any purpose whatsoever on the information or opinions contained in this Presentation or on its completeness, accuracy or fairness. Certain statements, beliefs and opinions in this Presentation are forward-looking, which reflect the Company's or, as appropriate, the Company's directors' current expectations and projections about future events. By their nature, forward-looking statements involve a number of risks, uncertainties and assumptions that could cause actual results or events to differ materially from those expressed or implied by the forward-looking statements. These risks, uncertainties and assumptions could adversely affect the outcome and financial effects of the plans and events described herein.

Forward-looking statements contained in this document regarding past trends or activities should not be taken as a representation that such trends or activities will continue in the future. The Company does not undertake any obligation to update or revise any forward-looking statements, whether as a result of new information, future events or otherwise. You should not place undue reliance on forward-looking statements, which speak only as of the date of this document. Recipients should not treat the contents of this Presentation as advice relating to legal, taxation or investment matters, and are to make their own assessments concerning these and other consequences of the various investments, including the merits of investing and the risks. Recipients are advised to conduct their own due diligence. The promotion of the Shares and the distribution of this Presentation in the United Kingdom are restricted by law. Accordingly, this Presentation is directed only at (i) persons outside the United Kingdom to whom it is lawful to communicate it, or (ii) persons having professional experience in matters relating to investments who fall within the definition "investment professionals" in Article 19(5) of the Financial Services and Markets Act 2000 (Financial Promotion) Order 2005, as amended (the "Order"), or (iii) high net worth companies, unincorporated associations and partnerships and trustees of high value trusts as described in Article 49(2) of the Order and any other persons who fall within other applicable exemptions under the Order, provided that in the case of persons falling into categories (ii) and (iii), the communication is directed only at persons who are also "qualified investors" as defined in Section 86 of the Financial Services and Markets Act 2000 (together, "Relevant Persons"). Any investment or investment activity to which this Presentation relates is available only to, and will be engaged in only with, Relevant Persons. This Presentation must not be acted on or relied on by persons who are not Relevant Persons. You represent and agree that you are a Relevant Person.

In receiving any information relating to the Company (whether in written or oral form), including the information in this Presentation, you will be deemed to have represented and agreed for the benefit of the Company and the other legal and financial advisers participating in this process (i) that you will only use such information for the purposes of discussions with the Company, (ii) to hold such information in strict confidence and not to disclose it (or any discussions with any of the Company) to any person, except as may be required by law, regulation or court order, (iii) not to reproduce or distribute, in whole or in part, (directly or indirectly) any of the information in this Presentation; (iv) that you will comply with all laws applicable to possessing such information, including without limitation insider trading laws, market abuse regulations and applicable regulations and recommendations of the UK Financial Conduct Authority or any other relevant regulator, and (v) that you are permitted, in accordance with all applicable laws, to receive such information.

Any dispute, action or other proceeding concerning this presentation shall be adjudicated within the exclusive jurisdiction of the courts of England. All material contained in this Presentation (including in this disclaimer) shall be governed by and construed in accordance with the laws of England and Wales.

Issued by Andalus Energy and Power Plc, a company incorporated in the Isle of Man.

INDONESIA SOUTH SUMATRA: BETUN SELO KSO

Strategic Business Logic

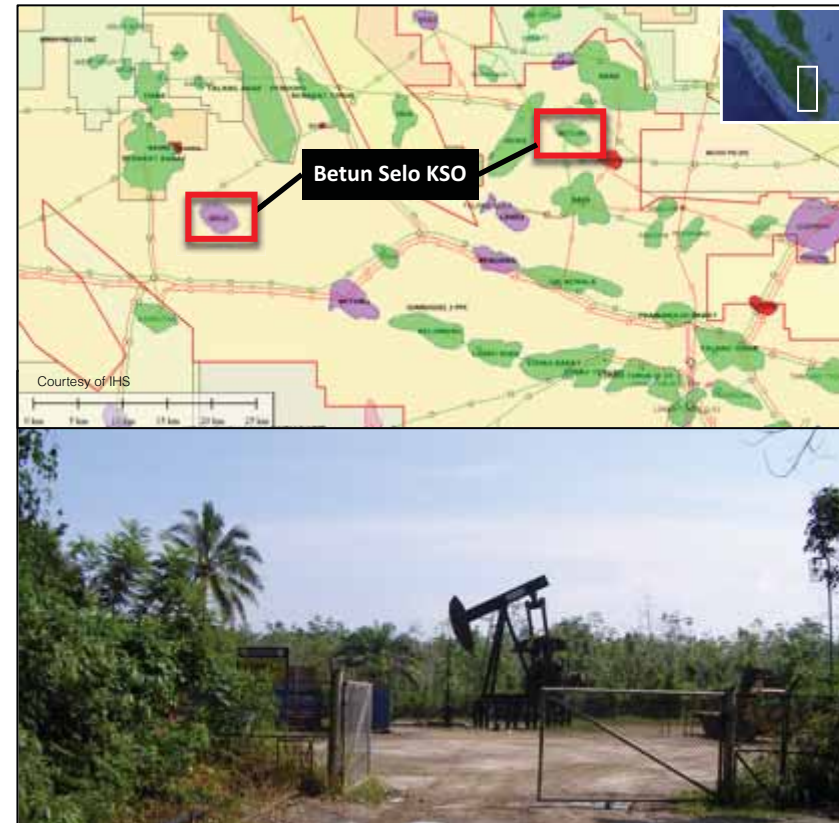
- Operating producing asset with upside
- 8-years left on the KSO licence
- Commitment:
 - Enter into a 9-months “Proof of Concept” at the end of which ADL’s options to complete on SPA
 - During 9-month period ADL will takeover and optimise operations
 - Workover 4-well in Betun
- ADL recovers its DD investment via incremental production from Betun

Core Value

- Oil asset that provides access to production with oil & gas upside:
 - Betun Field:
 - Currently producing at 70 bpd (3-wells) with potential to increase to 150 bpd with production optimisation and workover within 9-months
 - Upside: Remaining Reserves of 0.7 – 2.1 mmbbls via workover and in-fill drilling as per GG&R study conducted by Institute Teknologi Bandung (LAPI-ITB, 2013)
 - Selo Field:
 - Initial drilling prior to WW II. Field shut-in in late ‘60s. Wells temporarily abandoned.
 - Contingent Reserves between 1.3 – 4.3 mmbbls ⁽²⁾
 - Any new drills will unlock the true potential for the field
 - Some 33 bcf of gas available for commercialization in an area urgently requiring gas

Planned Operations & News Flow in 2019

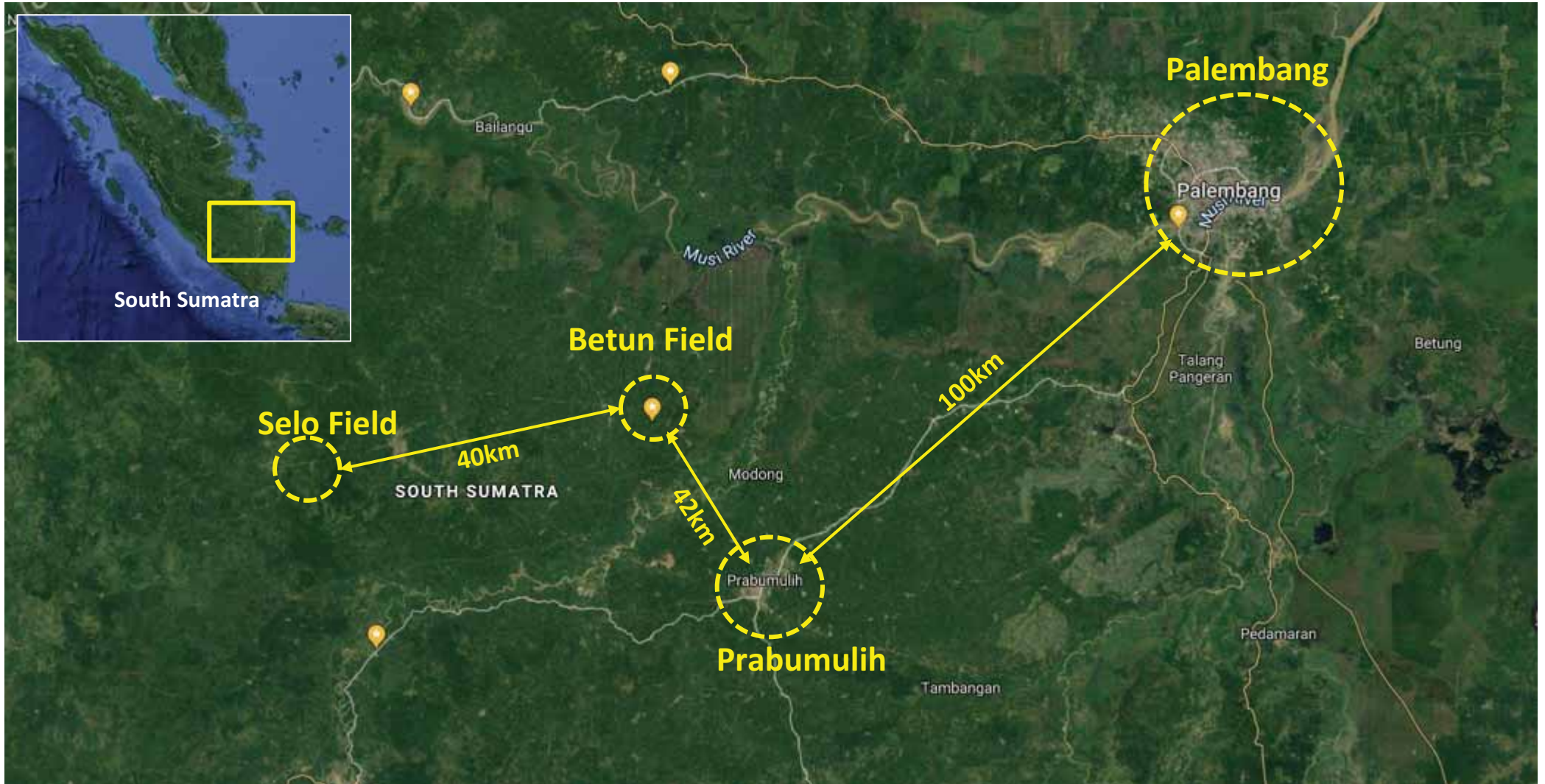
- ADL takes over operation from 5th April 2019 to optimise and increase production - including workover of 4 Betun wells as well as further in depth GG&R work to assess potential
- On successful completion of due diligence programme ADL will execute SPA and commence full field development



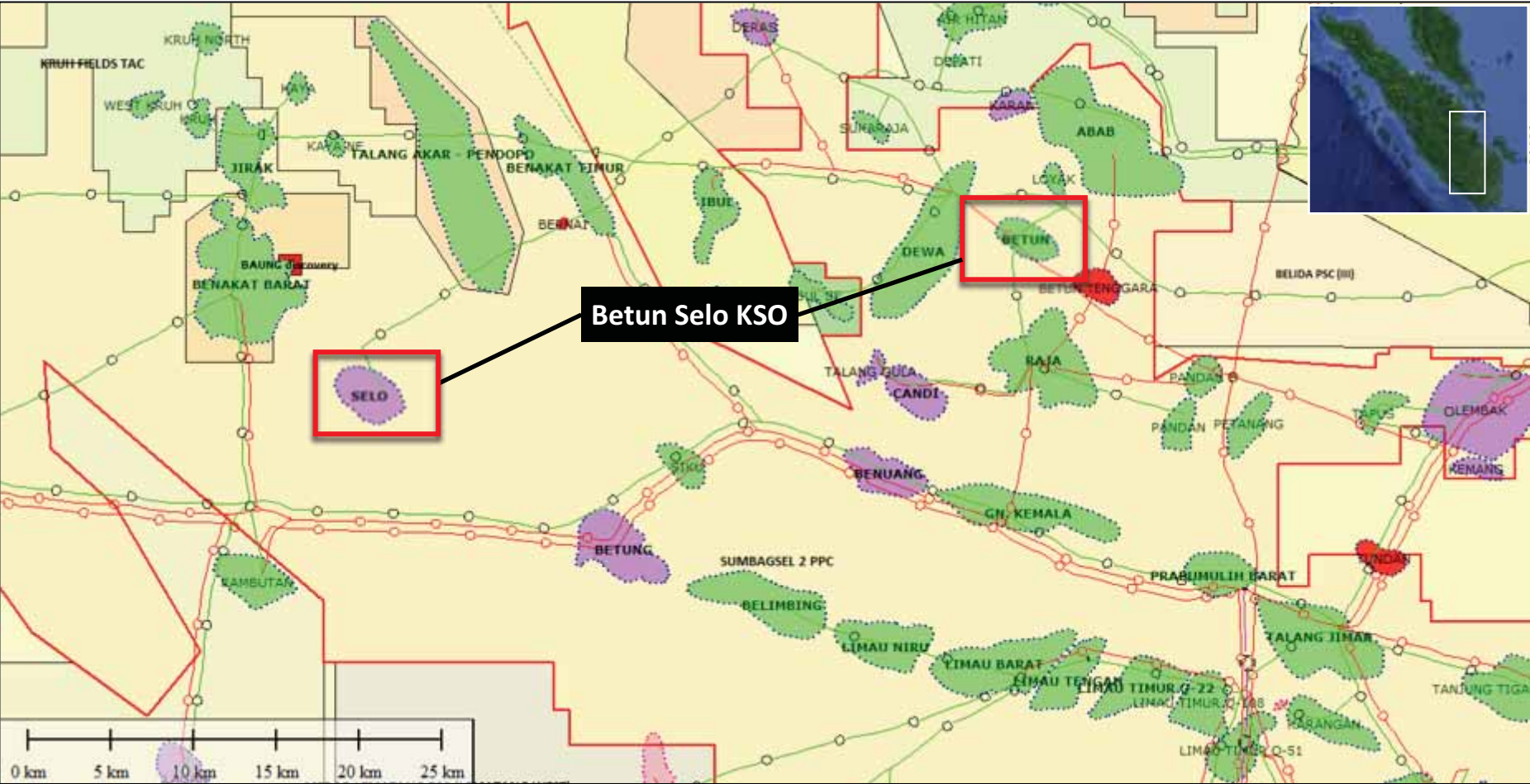
Remaining Reserves					
Field	Zone	1P	2P	3P	
Betun ⁽¹⁾	TAF ⁽³⁾ (oil) - mmbbls	0.7	1.6	2.1	
Contingent Reserves ⁽²⁾					
Field	Zone	Low	Mid	High	COGS
Selo	TAF ⁽³⁾ Shallow (oil) - mmbbls	1.3	2.6	4.3	70%
Contingent Reserves ⁽²⁾					
Field	Zone	Low	Mid	High	COGS
Selo	Lahat Deep (oil) - mmbbls	0.9	1.3	1.7	60%
Selo	Lahat Deep (gas) - bcf	21.3	33.0	46.7	60%

1. Reserves volumes extracted from 2013 ITB GG&R Report provided by operator
 2. Reserves and resource volumes estimated using guidance provided by the SPE. Refer to the March 2007 SPE/WPC/AAPG/SPEE Petroleum Resources Management System (PRMS³) and the 2011 SPE Guidelines for the Application of the PRMS.
 3. TAF: Talang Akar Formation

INDONESIA SOUTH SUMATRA: BETUN SELO KSO

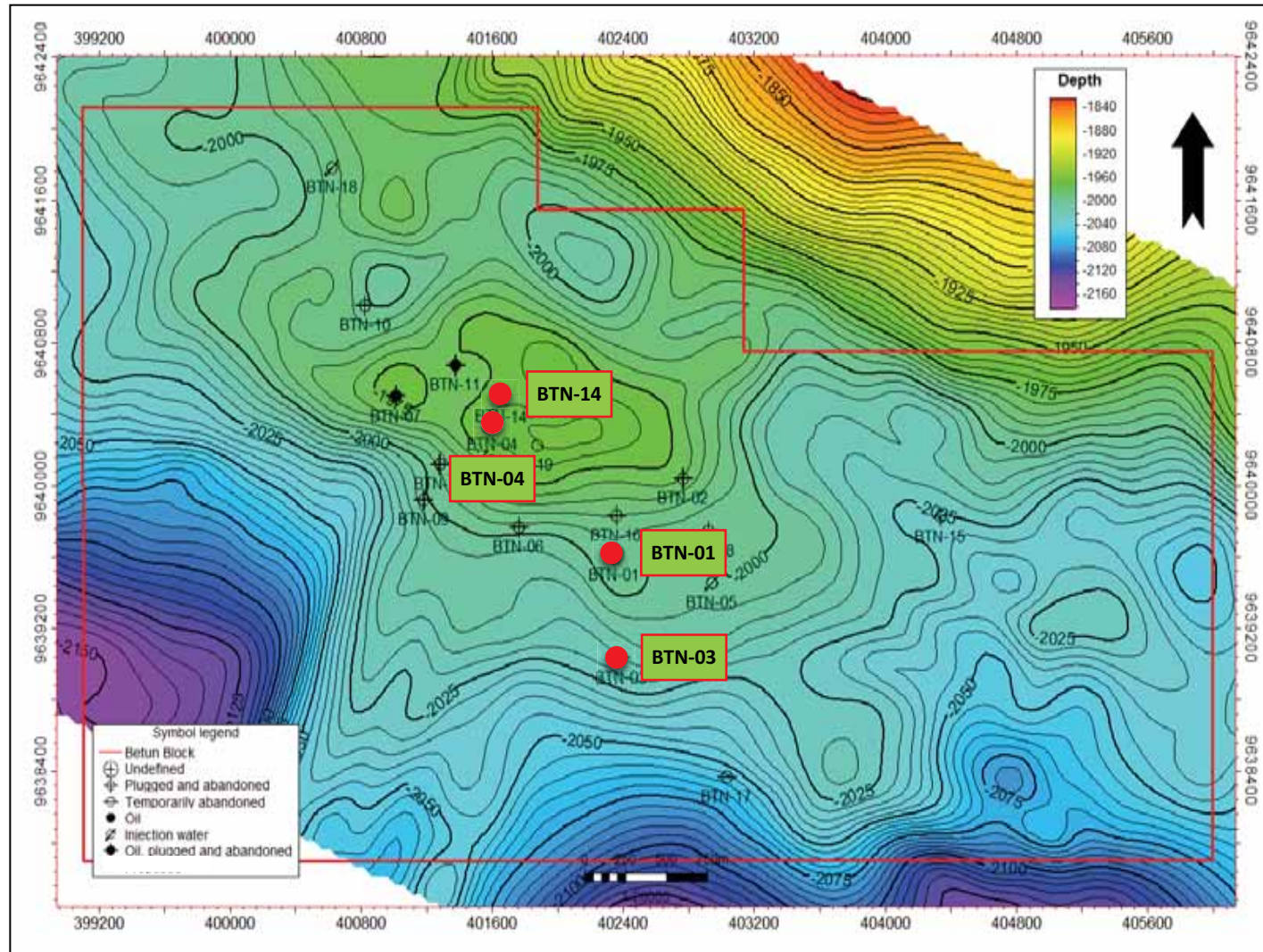


INDONESIA SOUTH SUMATRA: BETUN SELO KSO



Courtesy of IHS

INDONESIA SOUTH SUMATRA: BETUN SELO KSO



Betun Structure Map

INDONESIA SOUTH SUMATRA: BETUN SELO KSO



Betun Gathering Station and Well Sites

INDONESIA SOUTH SUMATRA: BETUN SELO KSO



Gathering Station & Well Site

INDONESIA SOUTH SUMATRA: BETUN SELO KSO



Betun – 14 Well

INDONESIA SOUTH SUMATRA: BETUN SELO KSO



Betun Production Manifold

INDONESIA SOUTH SUMATRA: BETUN SELO KSO



Betun Production Facilities

INDONESIA SOUTH SUMATRA: BETUN SELO KSO

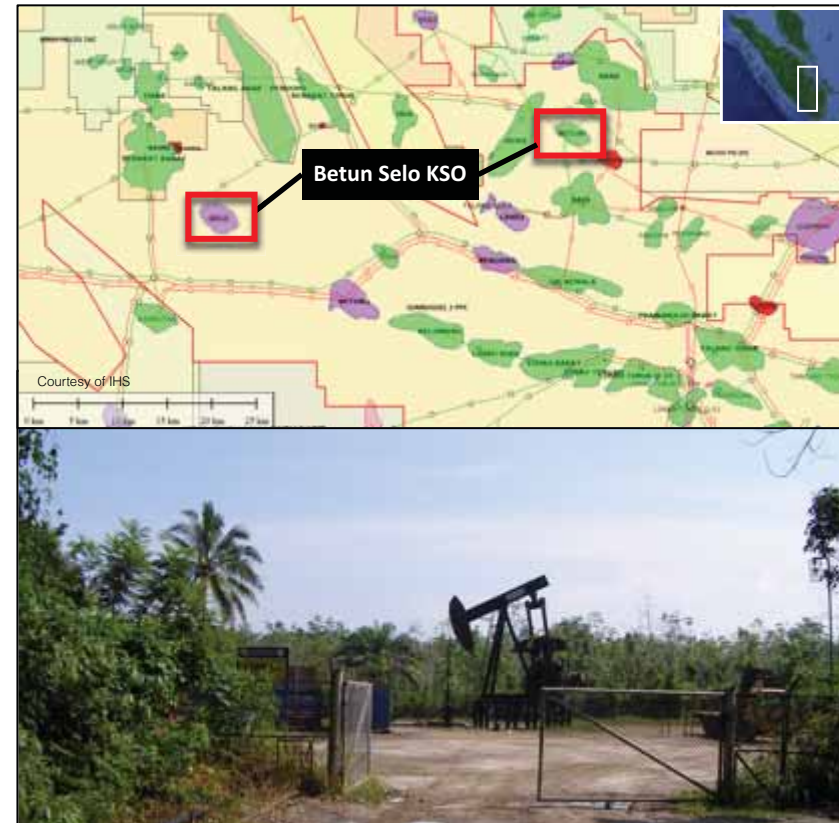


Oil Export Route

BETUN - WELL INTERVENTION OPPORTUNITIES

Proposed Short Term Work Programme

- BTN 14 Well Service to set SRP deeper in the well
- After BTN 14 Well Service move to BTN 1 and install over-sized pump
- After securing explosives permitting commence work on BTN 03 workover (WO)
- After BTN 03 is complete move to BTN 14 and commence WO
- After BTN 14 is complete move to BTN 4 and commence WO
- Install casing compression units (gas-jack)
- Conduct a gas test on BTN 17 to determine suitability to supply gas to power pump jacks



		Remaining Reserves			
Field	Zone	1P	2P	3P	
Betun ⁽¹⁾	TAF ⁽³⁾ (oil) - mmbbls	0.7	1.6	2.1	
		Contingent Reserves ⁽²⁾			
Field	Zone	Low	Mid	High	COGS
Selo	TAF ⁽³⁾ Shallow (oil) - mmbbls	1.3	2.6	4.3	70%
		Contingent Reserves ⁽²⁾			
Field	Zone	Low	Mid	High	COGS
Selo	Lahat Deep (oil) - mmbbls	0.9	1.3	1.7	60%
Selo	Lahat Deep (gas) - bcf	21.3	33.0	46.7	60%

1. Reserves volumes extracted from 2013 ITB GG&R Report provided by operator
 2. Reserves and resource volumes estimated using guidance provided by the SPE. Refer to the March 2007 SPE/WPC/AAPG/SPEE Petroleum Resources Management System (PRMS³) and the 2011 SPE Guidelines for the Application of the PRMS.
 3. TAF: Talang Akar Formation

CONTACTS AND ADVISERS

Andalas Energy & Power

Tel: +44 1624 681250

Optiva Securities

Joint Broker

Tel: +44 203 137 1902

Beaumont Comish Limited

Nominated Adviser

Tel: +44 20 7628 3396

Novum Securities Limited

Joint Broker

Tel: +44 20 7399 9427



Andalas Energy and Power Plc
IOMA House, Hope Street, Douglas, Isle of Man, IM1 1AP, United Kingdom
Registered in The Isle of Man under Company Number 010493V

www.andalasenergy.co.uk